



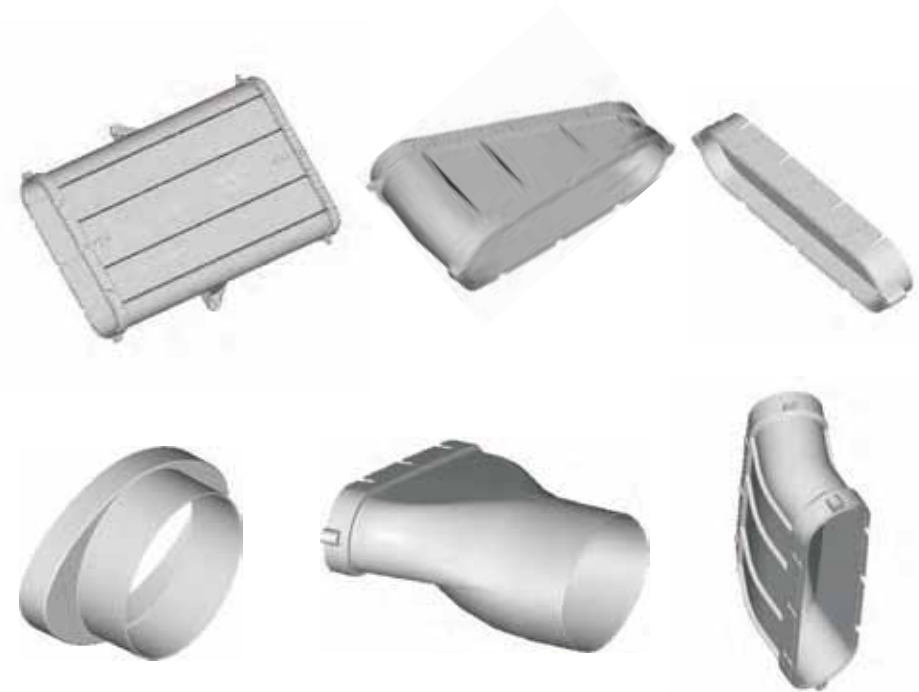
iconplastics.com.au

350mm x 75mm Oval
Ducting System

370mm x 93mm External

Icon Plastics "ico-duct" is compliant to
AS:1530.3 - 1999 Building Standard Specification
UL181.9 -1994 (in accordance with AS:4254-2002)

Feb 2017



Flat Elbow 22.5°

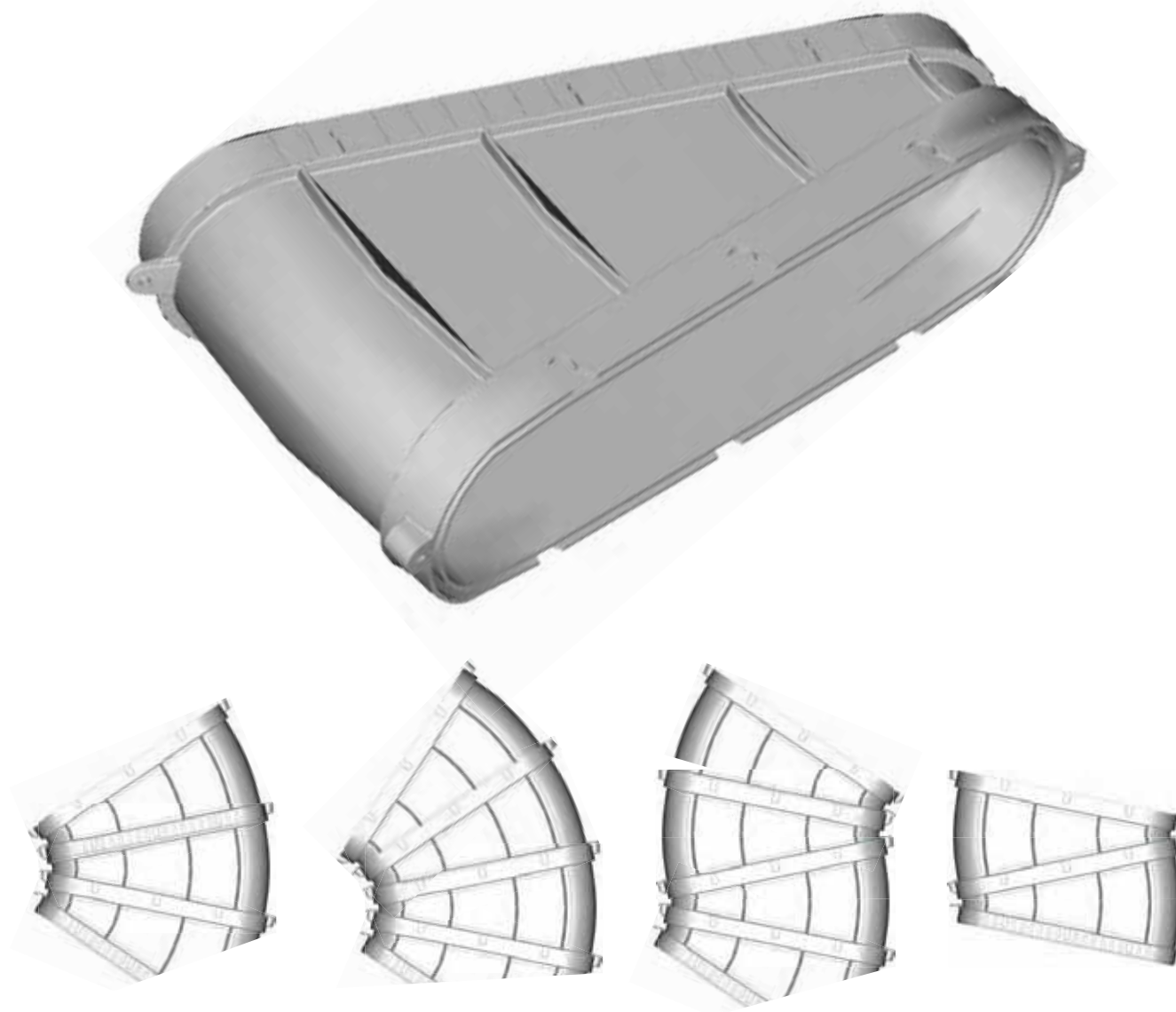
350mm x 75mm

Part No. 165-00801
Flat Elbow 22.5 Degrees (Separate Part)

45°

Part No. 165-00802
Flat Elbow 45 Degrees (2 x 22.5 deg)

Compliant to AS:1530.3-1999
UL181.9 -1994 (in accordance with AS:4254-2002)



Icon Plastics reserves the right to modify the ico-duct design without notice. All information correct at time of printing.

600mm Straight Duct

350mm x 75mm

Part No. 165-00797
600mm Straight Duct

1200mm

Part No. 165-00798
1200mm Straight Duct (2 x 600mm)

Compliant to AS:1530.3-1999
UL181.9 -1994 (in accordance with AS:4254-2002)



Icon Plastics reserves the right to modify the ico-duct design without notice. All information correct at time of printing.

Duct End Cap

350mm x 75mm

Part No. 165-00799
Straight Duct End Cap (Optional, on
request)

Compliant to AS:1530.3-1999
UL181.9 -1994 (in accordance with AS:4254-2002)



Reducer Adaptor 200Ø - 150Ø

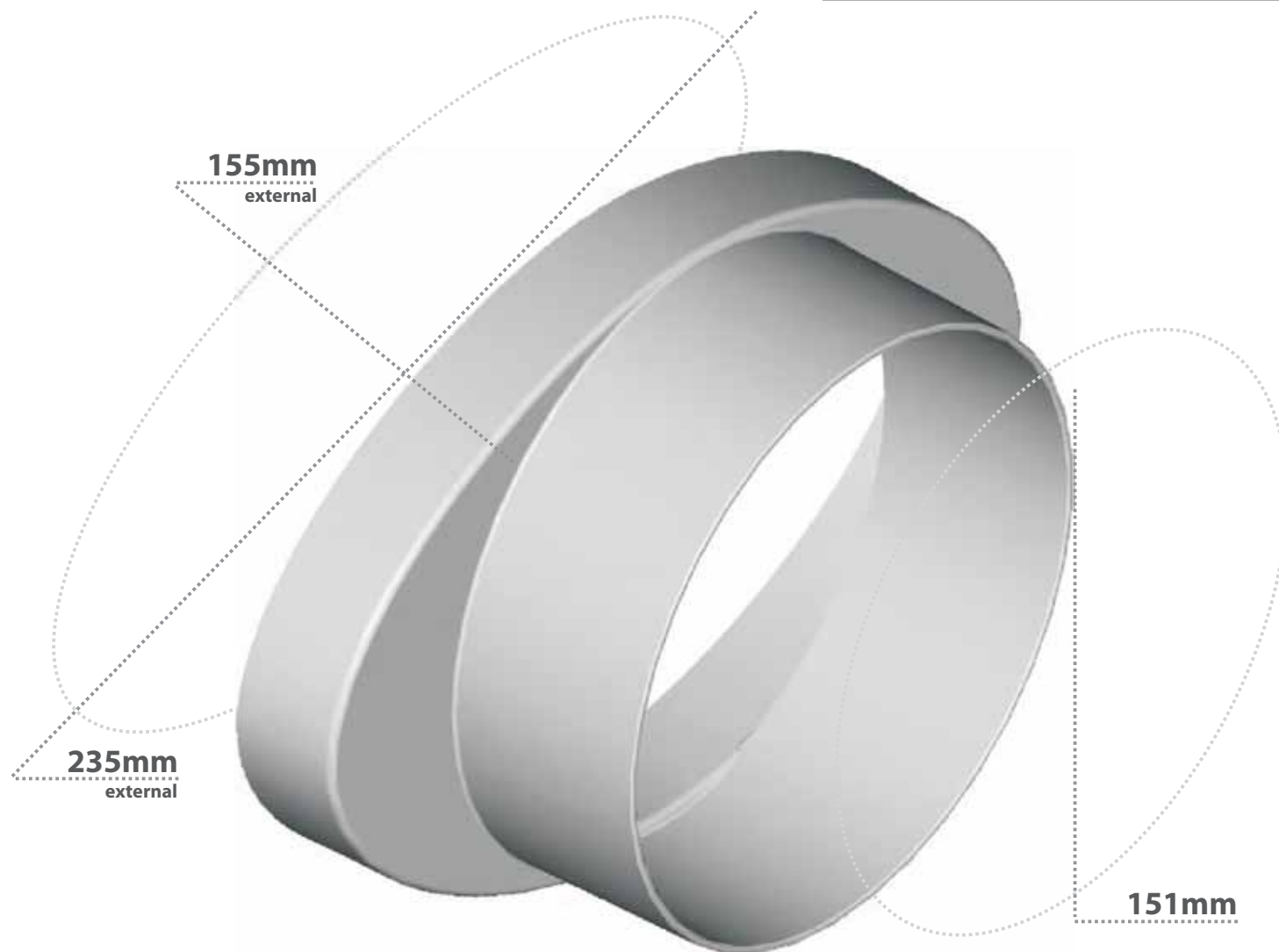
200mmØ to 150mmØ

Part No. 165-00796

Reducer Adaptor 200mmØ to 150mmØ

Compliant to AS:1530.3-1999

UL181.9 -1994 (in accordance with AS:4254-2002)

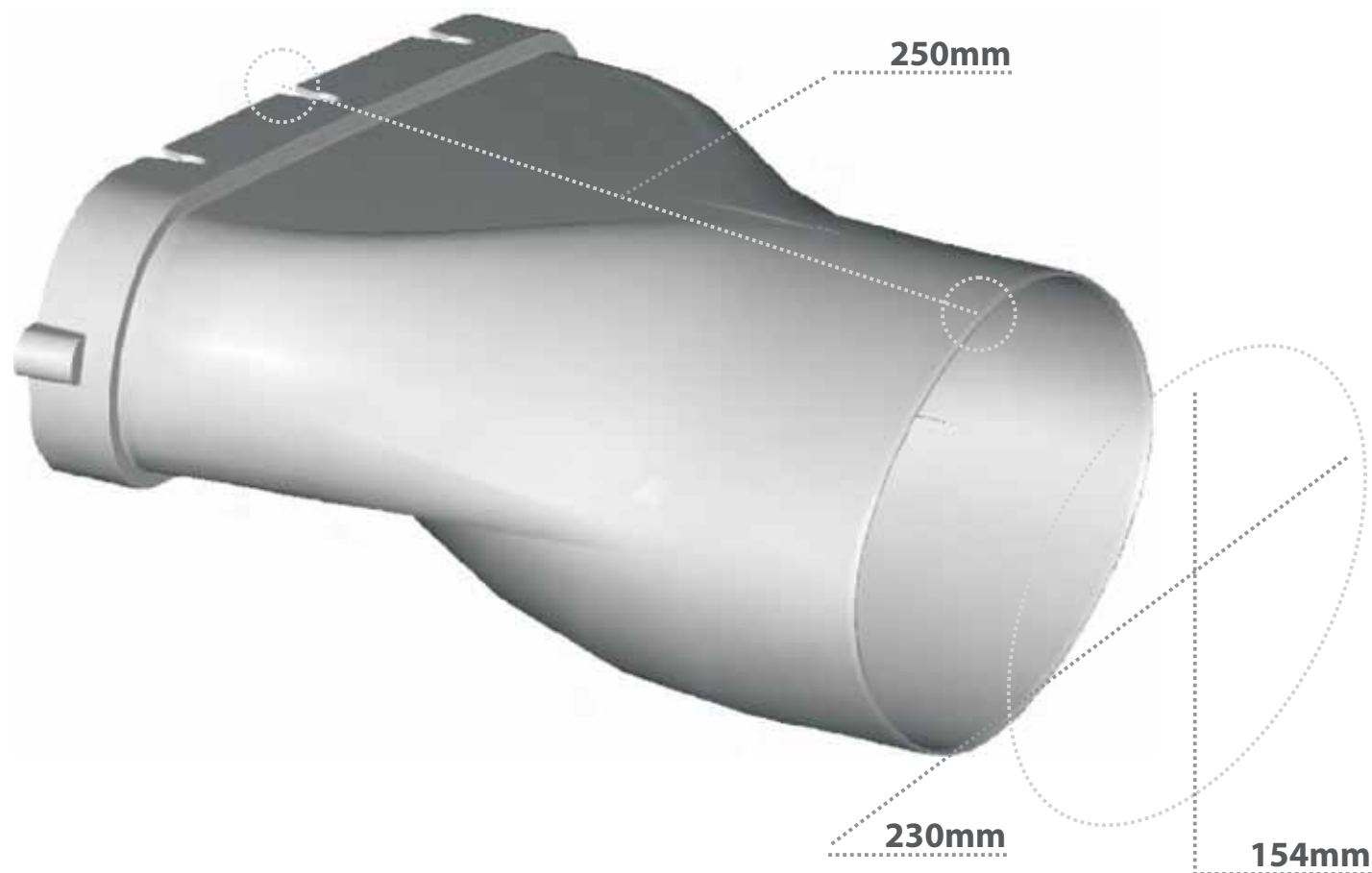


Round to Oval Adaptor

200mmø x 350mm x 75mm

Part No. 165-00795
Round to Oval Adaptor/200mmø

Compliant to AS:1530.3-1999
UL181.9 -1994 (in accordance with AS:4254-2002)



Straight Duct Joiner

350mm x 75mm

Part No. 165-00800
Straight Duct Joiner (Optional, on
request)

Compliant to AS:1530.3-1999
UL1819 -1994 (in accordance with AS:4254-2002)



Vertical Elbow 22.5°

350mm x 75mm

Part No. 165-00803

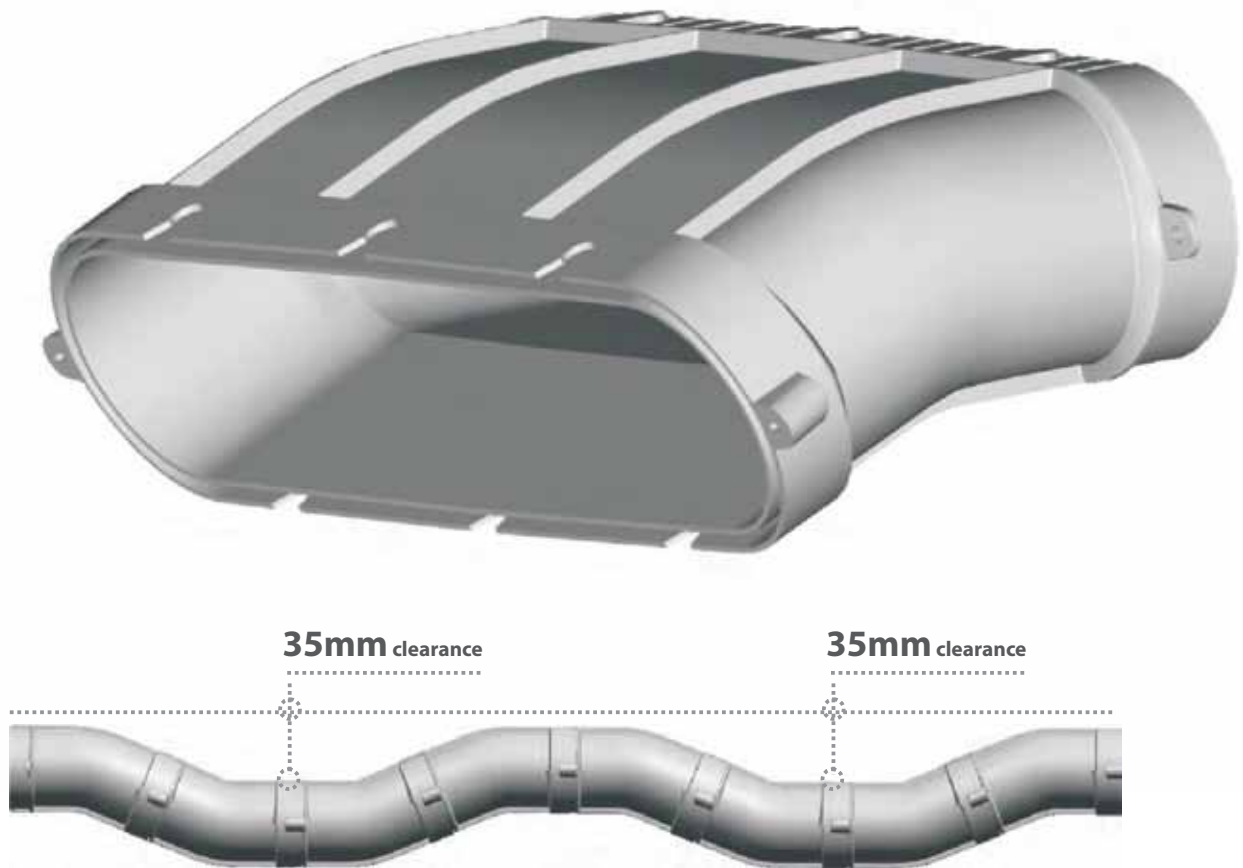
Vertical Elbow 22.5 degrees (Separate
Part)

45°

Part No. 165-00804

Vertical Elbow 45 degrees (2 x 22.5 deg)

Compliant to AS:1530.3-1999
UL181.9 -1994 (in accordance with AS:4254-2002)



Icon Plastics reserves the right to modify the ico-duct design without notice. All information correct at time of printing.

“Y” Intersection

Part No. 165-00797Y

Compliant to AS:1530.3-1999

UL181.9 -1994 (in accordance with AS:4254-2002)



Duct Bracket

Part No. 112029-003



Icon Plastics reserves the right to modify the ico-duct design without notice. All information correct at time of printing.

www.iconplastics.com.au



National Customer Service

T: 1800 803 236

F: 1800 805 086

Head Office

Icon Plastics Pty Ltd
19-21 Hallam Road South
Hallam, VIC 3803